

COMBIflo Condensing Water Heater

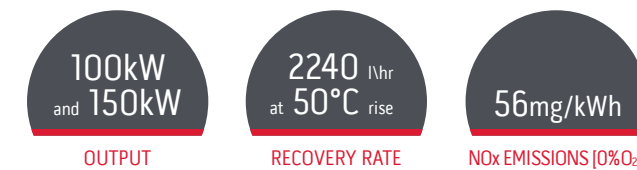
The COMBIflo condensing stainless steel water heater, with space heating capability, produces both hot water and heating from a single heat generator and storage vessel enclosed in one cabinet.

Combining up to three gas fired heat exchangers ensures a virtually instantaneous supply of up to 2240 litres per hour of hot water (at a 50°C rise) or 150kW of space heating.

Available in two outputs – 100 and 150kW, both with a 300 litre stainless steel storage tank – the COMBIflo can also be combined in multiples where even greater volumes of hot water or heating are required.



Technical Specification



Features

- Pre-packaged hot water and heating in one cabinet
- Water heater and space heating capability
- Compact and lightweight design that can be split into two parts
- Almost instantaneous hot water generation of up to 2240 L/hr and small integral 300L storage tank
- Up to three gas fired heat exchangers

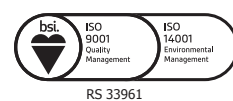
Benefits

- Quick and easy to install, saving time on site
- No need for separate appliances, saving space and ideal for smaller plant rooms with space constraints
- Easy to manoeuvre within a building; ideal for retrofit applications where plant rooms and/or access space may be limited
- Reduction in standing heat losses and levels of hot water generation, saving energy and costs
- Built in redundancy ensures a constant supply of hot water or heating

All the technical information you need is easy to find on our website, using your smart phone, tablet or PC:

- BIM files
- CAD files
- Brochures
- Technical specification sheets
- Case studies
- Installation manuals
- User guides
- Size-It Tool

Sales
0345 070 1055
Technical
0345 070 1057
Website
andrewswaterheaters.co.uk
Twitter
@AndrewsWH



Andrews. Built to perform.

Registered office address: Baxi Heating UK, Coventry Road, Warwick, CV34 4LL

Tel 0345 070 1055 | Web andrewswaterheaters.co.uk | @AndrewsWH

Andrews. Built to perform.



Specifications

		Model	
		100	150
Energy	Heat input gross (net)	kW	102.2 (94.0) 152.1 (140.0)
	Nominal heat output @ 80/60°C	kW	10.0 – 102.4 10.0 – 150.0
	Nominal heat output @ 50/30°C	kW	10.0 – 99.0 10.0 – 147.4
	Standby heat loss	W/24hr	140 170
	NOx emissions (0% O ₂)	mg/kWh	56 56
	NOx emissions (0% O ₂)	ppm	36.8 36.8
ErP	ErP efficiency		N/A N/A
Gas data	Gas flow rate (natural gas)	m ³ /h	9.9 14.8
Heating	Efficiency heat output at part load (EN15502-1) gross (net)	%	98.1 (108.9) 97.2 (107.9)
	Efficiency heat output at full load (EN15502-1) gross (net)	%	87.7 (97.3) 88.0 (97.7)
	Seasonal efficiency (Building regs part 2)	%	96.1 95.9
	Maximum permitted system temperature	°C	82 82
	Water	Storage capacity	litre
Recovery rate through 50°C Δt		litre/hr	1,520 2,240
Recovery rate through 56°C Δt		litre/hr	1,357 2,000
Operating pressure (unvented)		bar	3.5 3.5
Minimum working pressure		bar	0.2 0.2
Maximum pressure		bar	6 6
Electrical		Fuse rating	amp
	Power supply	V	240 v / 50 Hz 240 v / 50 Hz
	Electrical power consumption	W	285 425
Misc	Noise level	dB(A)	61 62
	Weight full	kg	608 641
	Weight empty	kg	290 320
	Flue diameter	mm	130/200 130/200
	Flue system classification	N/A	B23, C13, C33 & C53 B23, C13, C33 & C53
	Max flue run (Single/Concentric)	m	30 / 14 30 / 14

Accessories

Flueing and Ancillary

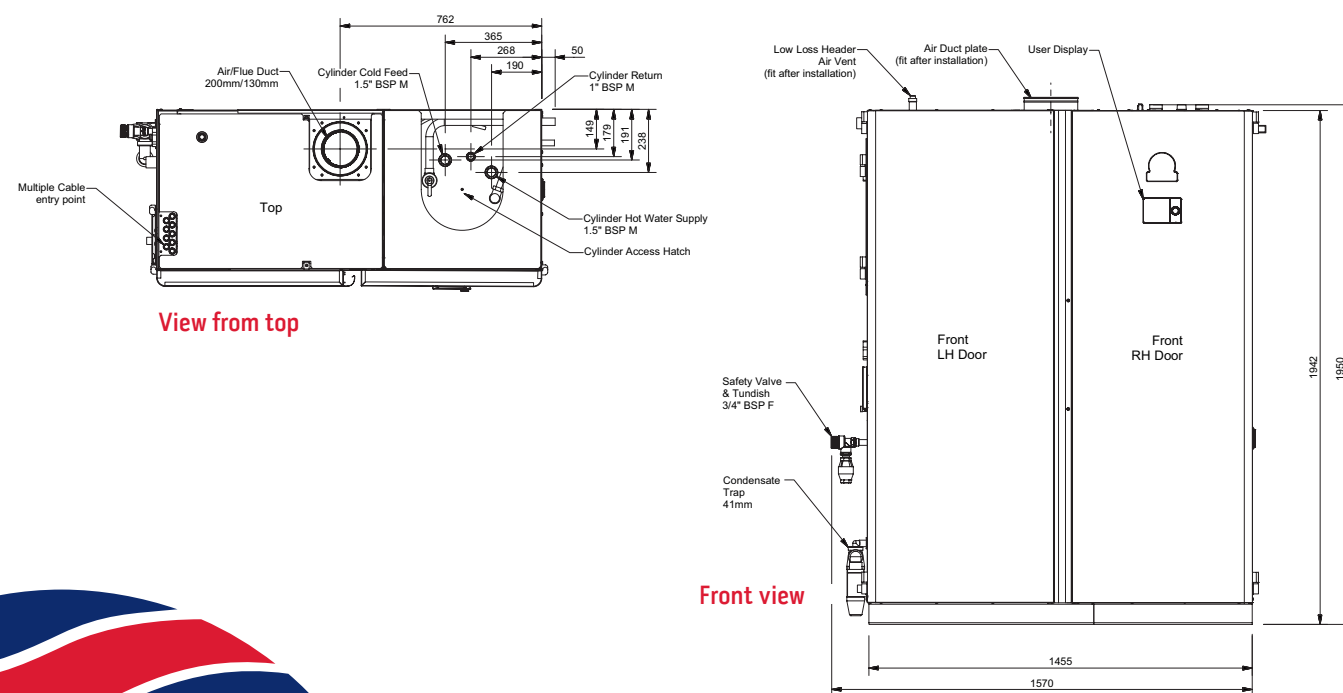
	100 150
	Sales code
Angled roof flashing 200 mm	E218
Commissioning tool	5141599
Concentric flue length 1 m 130/200 mm FEL 1.0	E212
Concentric flue length (cutable) 130/200 FEL 1.0	E213
Concentric flue length 0.5 m 130/200 mm FEL 0.5	E214
Concentric 45° bend 130/200 mm FEL 0.5	E216
Concentric 90° elbow 130/200 mm FEL 1.0	E215
Flat roof flashing 200 mm	E217
Flue condense trap 130/200 FEL 1.5	E220
Flue condense bottle trap 130/200	E211
Flue wall clamp 200 mm	E219
Horizontal flue kit 130/200 mm FEL 2.0	B263
Horizontal flue terminal guard	E630
QAC 34 outside sensor	5104726
QAD 36 flow sensor	5103867
RGB room controller (QAA55)	5138511
RGT room controller module (QAA75)	5117802
Unvented kit	B328
Vertical flue kit 130/200 mm FEL 1.6	B262

Service Clearance

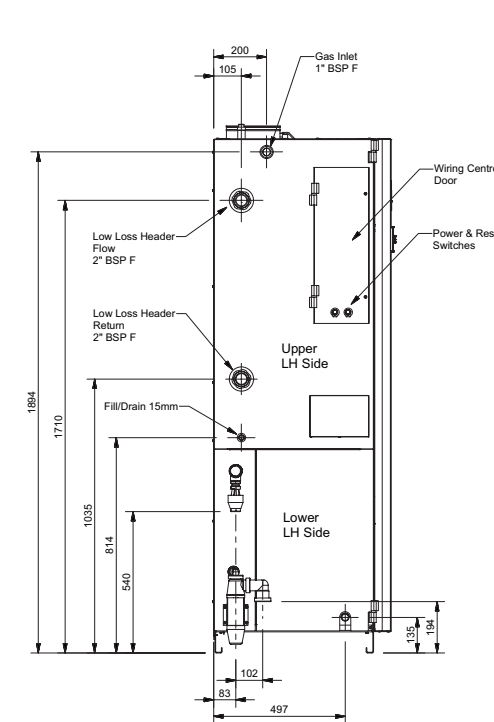
Front	Sides	Rear	Above
All Models			
800mm	L/H 800 mm R/H 300 mm R/H Immersion 600 mm	0	300mm

Dimensions

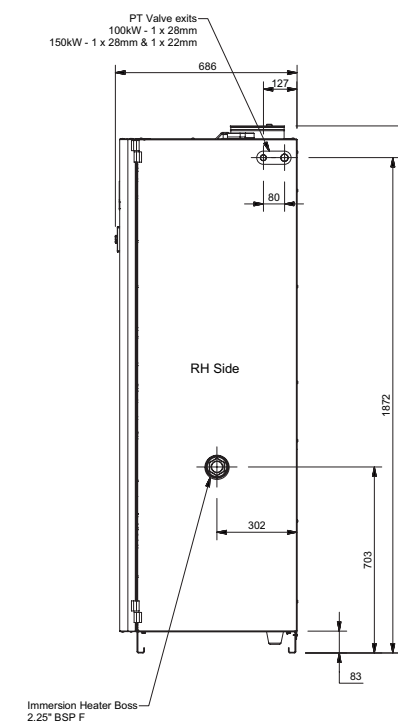
	100	150
	(mm)	(mm)
Width	1570	1570
Depth	686	686
Height	1992	1992



Left side view



Right side view



Andrews. Built to perform.

