

# FASTflo Instantaneous Water Heater

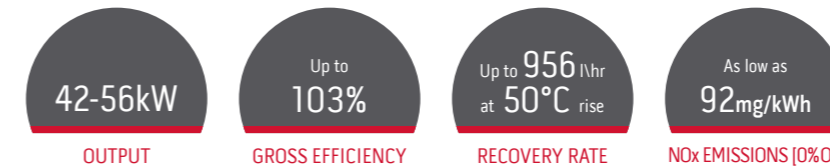
For situations where a continuous flow of hot water is required, FASTflo offers a very flexible, reliable and robust solution. They can be wall hung or floor mounted. Two models are available; one for Natural Gas and the other for LPG.

FASTflo can be combined in multiples of up to six units to provide a plentiful supply of instant hot water. FASTflo Plus is a fully condensing natural gas version with an efficiency of 103% net. It has a heat input of 54kW and will provide 15 litres per minute through a 56°C rise.



Product shown WHC56

## Technical Specification



## Features

- Up to 15 litres per minute
- Internal or external models available
- Copper finned tube heat exchanger
- 5:1 fully modulating burner
- Flexible flueing options
- Compact, light and robust construction
- Factory fitted frost protection
- WRAS approved

## Benefits

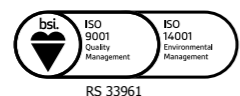
- Satisfies the most demanding applications
- Flexible siting, especially where space is at a premium
- Low maintenance, reliable and robust
- Adjusts the burner to meet the desired water temperature with no stand-by heat loss
- Suits most applications
- Can be installed quickly, saving time on site
- Can be installed externally and in areas without heating (external model only)
- Complies with the Water Supply (Water Fittings) Regulations and Scottish Byelaws



All the technical information you need is easy to find on our website, using your smart phone, tablet or PC:

- BIM files
- CAD files
- Brochures
- Technical specification sheets
- Case studies
- Installation manuals
- User guides
- Size-It Tool

Sales  
0345 070 1055  
Technical  
0345 070 1057  
Website  
andrewswaterheaters.co.uk  
Twitter  
@AndrewsWH



Andrews. Built to perform.

Registered office address: Baxi Heating UK, Coventry Road, Warwick CV34 4LL

Tel 0345 070 1055 | Web andrewswaterheaters.co.uk

Andrews. Built to perform.



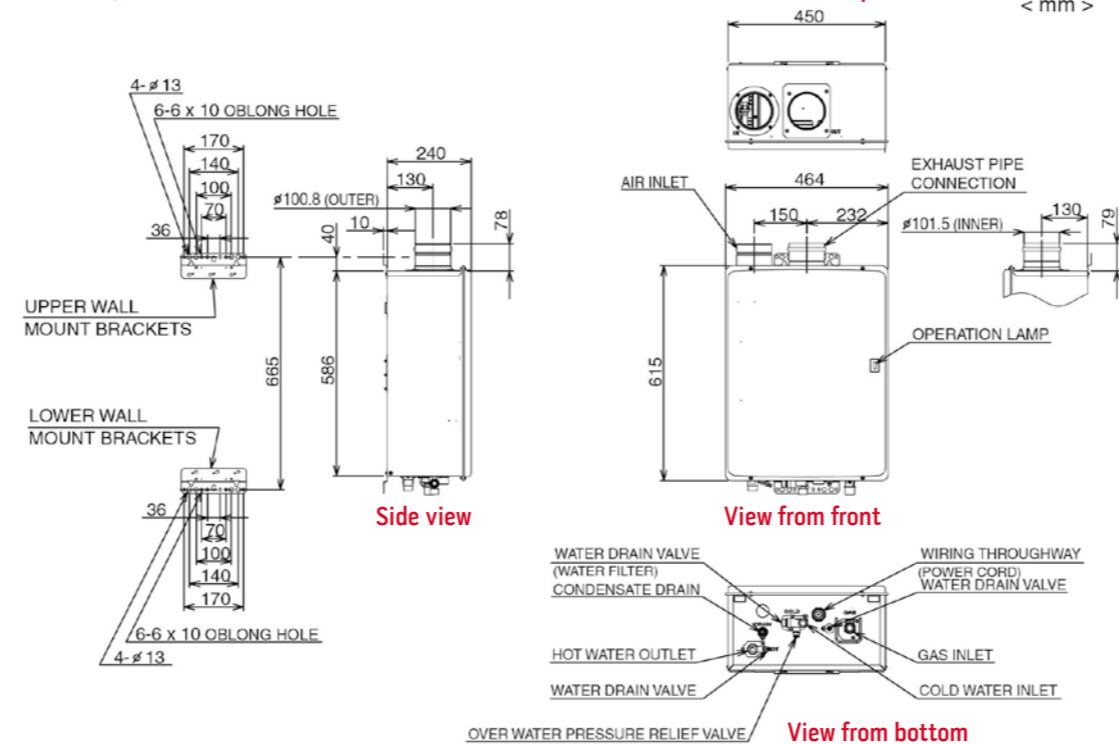
## Specifications

|            |  | Model             |        |         |         |         |
|------------|--|-------------------|--------|---------|---------|---------|
|            |  | Natural Gas:      | WH42   | WH56    | WHX56   | WHC56   |
|            |  | Propane:          | LWH42  | LWH56   | LWHX56  | LWHC56  |
| Energy     | Heat input (gross)                                 | kW                | 49     | 62.3    | 62.3    | 54      |
|            | Heat output  | kW                | 42     | 55.8    | 55.8    | 55.8    |
|            | Gross thermal efficiency                           | %                 | 86%    | 90%     | 90%     | 103%    |
|            | NOx emissions (0% O <sub>2</sub> ) natural/propane | mg/kWh            | 92/106 | 92/106  | 106/128 | 106/123 |
|            | NOx emissions (0% O <sub>2</sub> ) natural/propane | ppm               | 52/60  | 52/60   | 60/72   | 60/70   |
| ErP        | ErP efficiency rating                              |                   | B      | B       | B       | A       |
| Gas data   | Gas flow rate (natural gas)                        | m <sup>3</sup> /h | 5.1    | 6.5     | 6.5     | 5.1     |
|            | Gas flow rate (propane)                            | m <sup>3</sup> /h | 1.9    | 2.5     | 2.5     | N/A     |
| Water      | Storage capacity                                   | Litre             | N/A    | N/A     | N/A     | N/A     |
|            | Recovery rate through 50°CΔt                       | Litre/hr          | 720    | 956     | 956     | 956     |
|            | Recovery rate through 56°CΔt                       | Litre/hr          | 642    | 854     | 854     | 854     |
|            | Operating pressure (unvented)                      | bar               | 3.5    | 3.5     | 3.5     | 3.5     |
|            | Minimum working pressure                           | bar               | 0.2    | 0.2     | 0.2     | 0.2     |
|            | Maximum pressure                                   | bar               | 10     | 10      | 10      | 10      |
| Electrical | Fuse rating  | amp               | 10     | 10      | 10      | 10      |
|            | Electrical power consumption                       | W                 | 89/85  | 120/112 | 83      | 140     |
| Misc       | Noise level  | dBA               | 49     | 49      | 49      | 49      |
|            | Weight full  | kg                | 30     | 30      | 31      | 30      |
|            | Weight empty                                       | kg                | 29     | 29      | 30      | 29      |

## Dimensions

|               | WH42  | WH56  | WHX56  | WHC56  |
|---------------|-------|-------|--------|--------|
|               | LWH42 | LWH56 | LWHX56 | LWHC56 |
|               | [mm]  | [mm]  | [mm]   | [mm]   |
| D             | 240   | 240   | 240    | 240    |
| W             | 450   | 450   | 450    | 465    |
| H             | 615   | 615   | 615    | 615    |
| Flue diameter | 100   | 100   | 100    | 100    |

### WHC56, LWHC56



## Accessories

### Flueing and Ancillary

|                       |  | WH42/56, LWH42/56, WHX56, LWHX56 |
|-----------------------|--|----------------------------------|
|                       |  | Part No                          |
| Horizontal flue kit   |  | B324                             |
| Vertical flue kit     |  | B325                             |
| 1 metre flue          |  | E202                             |
| 1 metre cuttable flue |  | E203                             |
| 0.5 metre flue        |  | E204                             |
| 90° bend              |  | E205                             |
| 45° bend              |  | E206                             |
| Flat roof plate       |  | E207                             |
| Angled roof plate     |  | E208                             |
| Wall clamp            |  | E209                             |
| Flue condensate trap  |  | E210                             |
| Siphon                |  | E211                             |
| Wall terminal guard   |  | E105                             |

### Flueing and Ancillary

|   |  | WHC56, LWHC56 (Condensing) |
|---|--|----------------------------|
|   |  | Part No                    |
| Horizontal wall terminal kit (inc. adaptor) |  | 5136168                    |
| Vertical flue terminal kit (inc. adaptor)   |  | 5136169                    |
| 1 metre straight extension                  |  | 5136159                    |
| 0.5 metre straight extension                |  | 5136160                    |
| 45° elbow                                   |  | 5136161                    |
| 87° elbow                                   |  | 5136162                    |
| Wall bracket                                |  | 5136163                    |
| Siphon kit c/w condensate trap              |  | 5136164                    |
| Locking clamp                               |  | 5136165                    |
| Seal  |  | 5136166                    |



Andrews. Built to perform.



ANDREWS  
WATER HEATERS