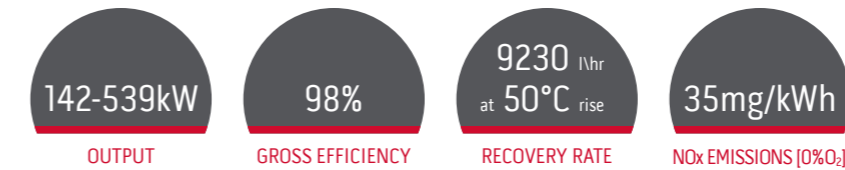


# SUPAflo Condensing Water Heater

SUPAflo is a continuous flow water heater that can provide instant hot water with an impressive recovery rate of up to 9230 litres per hour at 50°C rise. There are seven models in the range, with heat outputs from 142kW to 539kW. Its small footprint and high quality, lightweight design makes it very flexible to site. SUPAflo is supplied with a gas filter, condensate trap and UPS bronze primary pump, to aid installation.



### Technical Specification



### Features

- 98% gross efficiency
- Hot water recovery of up to 9230 litres per hour at 50°C
- Seven models, 142kW to 539kW
- High quality stainless steel heat exchanger
- Compact, lightweight design with small footprint
- Natural Gas or LPG
- WRAS approved and Energy Technology Listed

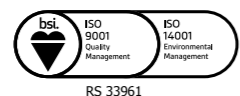
### Benefits

- Energy efficient, cost effective operation
- Satisfies the most demanding applications
- Suitable for large commercial and industrial applications that require large quantities of hot water
- Very efficient and low maintenance
- Less space required for installation
- Can be installed in off mains gas areas
- Complies with the Water Supply (Water Fittings) Regulations and Scottish Byelaws and qualifies for the Government Enhanced Capital Allowance Scheme

All the technical information you need is easy to find on our website, using your smart phone, tablet or PC:

- BIM files
- CAD files
- Brochures
- Technical specification sheets
- Case studies
- Installation manuals
- User guides
- Size-It Tool

Sales  
0345 070 1055  
Technical  
0345 070 1057  
Website  
andrewswaterheaters.co.uk  
Twitter  
@AndrewsWH



Andrews. Built to perform.

Registered office address: Baxi Heating UK, Coventry Road, Warwick CV34 4LL

Tel 0345 070 1055 | Web andrewswaterheaters.co.uk

Andrews. Built to perform.



## Specifications

			Model						
			SF61	SF62	SF63	SF64	SF65	SF66	SF67
Energy	Heat input (gross)	kW	145	194	242	291	388	485	550
	Heat output	kW	142	190	237	285	380	475	539
	Gross thermal efficiency	%	98	98	98	98	98	98	98
	Standby heat loss @ 70°C	%	0.21	0.18	0.17	0.16	0.15	0.14	0.13
	NOx emissions (0% O <sub>2</sub> )	mg/kWh	35	35	35	35	35	35	35
Gas data	Gas flow rate (natural gas)	m <sup>3</sup> /hr	13.3	17.8	22.2	26.7	35.6	44.5	50.5
	Gas flow rate (propane)	kg/hr	11.3	15.2	18.9	22.7	30.3	37.9	43
Water	Storage capacity	Litre	27	31	35	61	68	75	82
	Recovery rate through 50°C Δt	Litre/hr	2430	3250	4050	4880	6510	8130	9230
	Recovery rate through 56°C Δt	Litre/hr	2160	2900	3620	4350	5810	7260	8240
	Operating pressure (unvented)	bar	3.5	3.5	3.5	3.5	3.5	3.5	3.5
	Minimum working pressure	bar	1	1	1	1	1	1	1
	Maximum pressure	bar	8	8	8	8	8	8	8
Electrical	Fuse rating	amp	10	10	10	10	10	10	10
	Electrical power consumption max/min	W	158 / 43	200 / 35	230 / 35	260 / 35	470 / 61	650 / 61	770 / 61
Misc	Noise level	dBA	59	59	59	59	59	59	59
	Weight full	kg	322	376	435	526	603	665	732
	Weight empty	kg	295	345	400	465	535	590	650

## Accessories

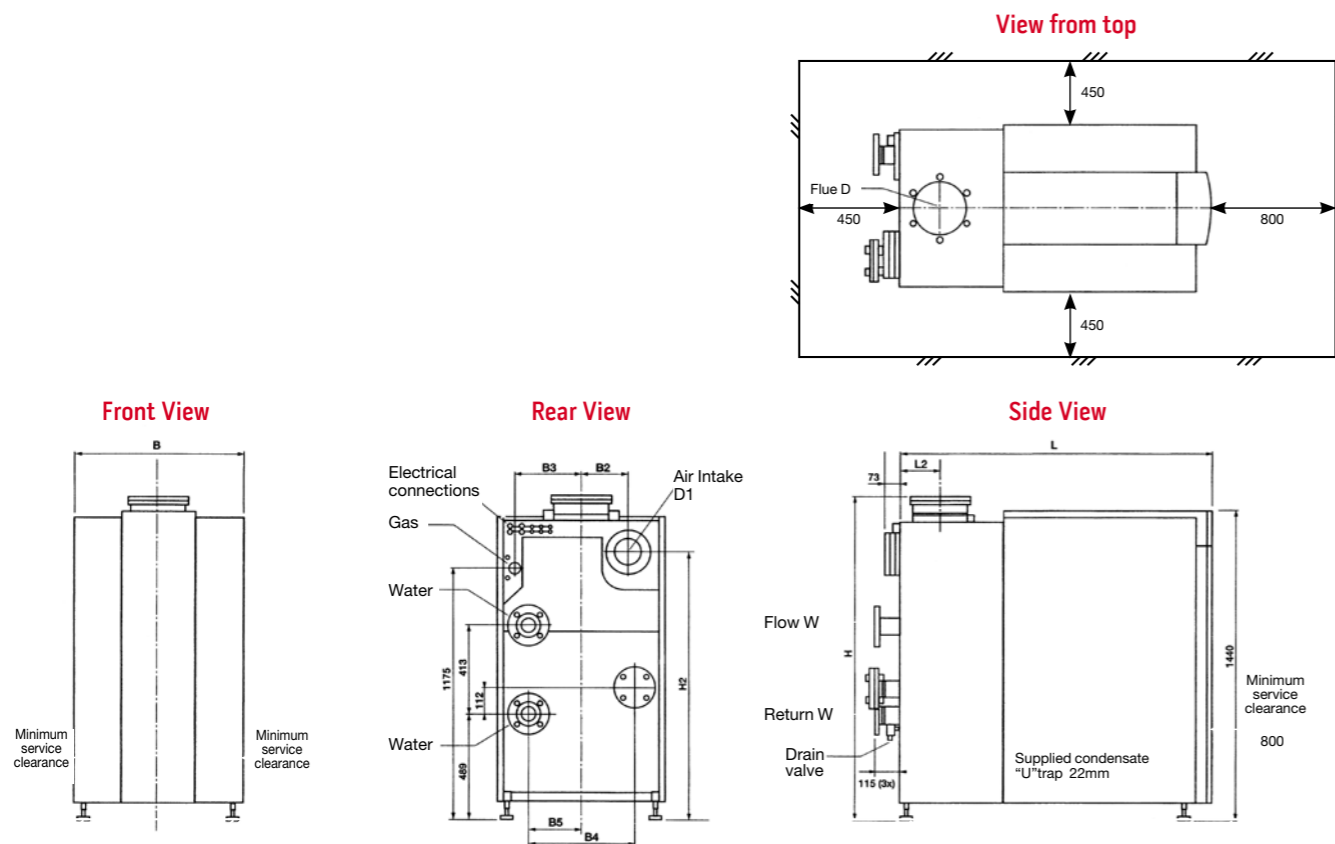
	Part Number
All Models	
SF61 - SF63 Unvented Systems Kit	B312
SF64 - SF67 Unvented Systems Kit	B313

## Service Clearance

Front	Sides	Rear	Above
All Models			
800mm	450mm	450mm	500mm

## Dimensions

	unit	SF 61	SF 62	SF 63	SF 64	SF 65	SF 66	SF 67
B: Heater width	mm	670	670	670	770	770	770	770
B2: Air intake centre	mm	225	235	235	235	215	215	215
B3: Gas pipe centre	mm	260	260	260	310	310	310	310
B4: Pipe connection centre	mm	260	260	260	490	490	490	490
B5: Flow and return pipe centre	mm	130	130	130	245	245	245	245
L: Heater depth	mm	1105	1260	1470	1220	1435	1585	1735
L2: Flue center	mm	128	128	138	138	188	188	188
H: Heater height	mm	1480	1480	1500	1500	1500	1500	1500
H2: Air intake height	mm	1120	1130	1130	1150	1245	1245	1245
W: Water port size	Inch	2"	2"	2"	DN65 / PN16	DN65 / PN16	DN65 / PN16	DN65 / PN16
G: Gas connection size	Inch	3/1"	1"	1"	1"	1 1/2"	1 1/2"	1 1/2"
D1: Air intake diameter	mm	130	150	150	150	200	200	200
D: Flue diameter	mm	150	150	200	200	250	250	250
Pump length	mm	180	220	250	250	280	340	340
Pump type	N/A	UPS 32-80 B 240V	UPS 32-120 FB 240V	UPS 40-120 FB 240V	UPS 40-120 FB 240V	UPS 50-120 FB 240V	UPS 65-120 FB 415V	UPS 65 - 180 FB 415V



Andrews. Built to perform.

